



# Cevisama

## Press Kit



## Unexpected Ceramics

### Red as Transformation

At Cristacer we believe in the ability of ceramics to surprise and transform spaces, and we were inspired by designer Taylor Migliazzo Simon's theory of 'The Unexpected Red'. According to this idea, adding a touch of red to any environment, even if at first it may not seem to match, automatically enhances it.

We apply this principle to our ceramics, opting for designs that break with convention and generate a unique visual impact.

Our new collections are a tribute to this philosophy, exploring bold combinations and creating pieces that become the focal point of any space.

Just like the unexpected red in interior design, our proposals seek to surprise and bring added value to every environment.

CRİŞTĂCER

Level 2  
Pavilion 1  
Stand A70

# Stand



## STAND

### The Red Cube

Welcome to the 2025 edition of Cevisama, a key year for Cristacer, where we continue to evolve in the ceramic sector to make you feel close to us.

This year, our stand is presented with a powerful and symbolic image: a big red cube.

This cube represents our company, our corporate colour and, above all, the process of evolution that we have undergone in recent years.

On many occasions, the changes in a company are only visible from the outside, like the faces of a cube. However, in Cristacer we wanted to go further and open this cube, inviting you to discover what is inside.

Inside this innovative space you will find our new products, exclusive designs and the essence that defines Cristacer. Our commitment to people, quality, technology and design are reflected in every piece, in every texture and in every finish.

With this opening of the cube, we show you not only our evolution, but also the heart of our company.

We invite you to explore this unique space, where ceramics come to life and where every detail reflects our desire to continue growing and innovating together with you. Thank you for joining us on this journey and for being part of Cristacer's evolution.







# STAND

The Red Cube



CRİŠTÁCER

**Product**  
Producto



# Ardena

## Natural Elegance and Functionality

Cristacer's Ardena collection is inspired by natural slate, a material with a long tradition in architecture. This rectified porcelain tile finish provides a sophisticated and contemporary aesthetic, ideal for modern and elegant spaces.

Available in White, Ivory, Pearl and Graphite colours, and in three formats: 60x120 cm, 59,2x59,2 cm and 29,2x59,2 cm. In addition, the anti-slip option (Class 3) is available in the 59.2x59.2 cm format.

Thanks to their advanced technical properties, Ardena floor and wall coverings are highly resistant to stains and moisture, with minimal maintenance.

For wall decoration, the collection includes the Ardena Chisel and Ardena Split reliefs, inspired by traditional stonework, in 60x120 cm and 29.2x29.2 cm formats.





Ardena Ivory Grip 59,2x59,2 cm - Sawan Green Grip 15x15

CRISTĂCER





Ardena Graphite 60x120 cm - Ardena Chisel Graphite 60x120 cm - Ardena White 60 x 120 cm - Ardena Chisel White 60x120 cm

CRISTĂCER





Ardena Graphite 60x120 cm - Ardena White 60 x 120 cm - Ardena Chisel White 60x120 cm





# Ardena

60 x 120  
59,2 x 59,2  
29,2 x 59,2



PORCELAIN



FLOOR



WALL



MATT



RECTIFIED



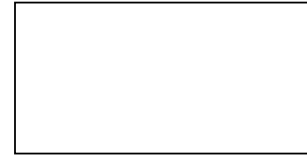
ANTI - SLIP



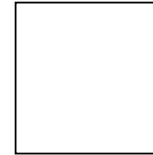
CLASS 3



MODERATED



60 x 120 cm | M - 130  
23,6" x 47,2" | M - 130



59,2 x 59,2 cm | M - 175  
23,3" x 23,3" | M - 175



29,2 x 59,2 cm | M - 135  
11,5" x 23,3" | M - 135



29,2 x 29,2 cm | M - 010  
11,5" x 11,5" | M - 010

WHITE

## ARDENA CHISEL WHITE



60 x 120 cm | M - 133  
23,6" x 47,2" | M - 133

## ARDENA CHISEL IVORY



60 x 120 cm | M - 133  
23,6" x 47,2" | M - 133

IVORY

## ARDENA CHISEL PEARL



60 x 120 cm | M - 133  
23,6" x 47,2" | M - 133

## ARDENA CHISEL GRAPHITE



60 x 120 cm | M - 133  
23,6" x 47,2" | M - 133

PEARL

## ARDENA SPLIT WHITE



29,2 x 59,2 cm | M - 138  
11,5" x 23,3" | M - 138

## ARDENA SPLIT IVORY



29,2 x 59,2 cm | M - 138  
11,5" x 23,3" | M - 138

## ARDENA SPLIT PEARL



29,2 x 59,2 cm | M - 138  
11,5" x 23,3" | M - 138

## ARDENA SPLIT GRAPHITE



29,2 x 59,2 cm | M - 138  
11,5" x 23,3" | M - 138

GRAPHITE



# Bronzatta

60 x 120  
59,2 x 59,2  
29,2 x 59,2



PORCELAIN



FLOOR



WALL



MATT



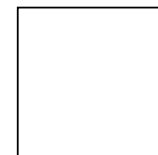
RECTIFIED



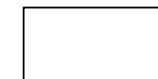
LIGHT



60 x 120 cm | M - 130  
23,6" x 47,2" | M - 130



59,2 x 59,2 cm | M - 175  
23,3" x 23,3" | M - 175



29,2 x 59,2 cm | M - 135  
11,5" x 23,3" | M - 135

## BRONZATTA CHISEL WHITE



60 x 120 cm | M - 133  
23,6" x 47,2" | M - 133

## BRONZATTA SEA WHITE



29,2 x 59,2 cm | M - 138  
11,5" x 23,3" | M - 138

Bronzatta Chisel White 60 x 120 cm

WHITE



Bronzatta White 29,2 x 59,2 cm · Bronzatta Sea White 29,2 x 59,2 cm · Bronzatta White 59,2 x 59,2 cm

# Formentor



Formentor Beige 120 x 120 cm Grip



Formentor Gris 120 x 120 cm



Formentor Marfil 120 x 120 cm



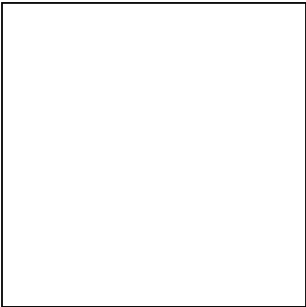


Formmentor Gris 60 x 120 cm

# Formmentor

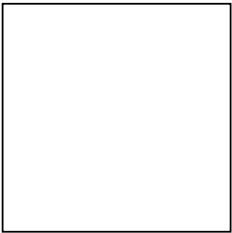
120 x 120 59,2 x 59,2  
60 x 120 33,3 x 33,3  
90 x 90 29,2 x 59,2

- PO PORCELAIN
- FLOOR
- WALL
- MATT
- RECTIFIED
- ANTI-SLIP
- C3 CLASS 3
- V3 MODERATED



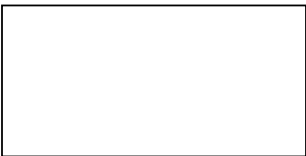
120 x 120 cm | M - 207  
47,2" x 47,2" | M - 207

120 x 120 cm Grip | M - 208  
47,2" x 47,2" Grip | M - 208



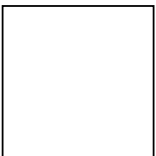
90 x 90 cm | M - 200  
35,4" x 35,4" | M - 200

90 x 90 cm Grip | M - 200  
35,4" x 35,4" Grip | M - 200



60 x 120 cm | M - 130  
23,6" x 47,2" | M - 130

60 x 120 cm Grip | M - 130  
23,6" x 47,2" Grip | M - 130

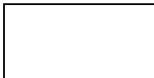


59,2 x 59,2 cm | M - 175  
23,3" x 23,3" | M - 175

59,2 x 59,2 cm Grip | M - 175  
23,3" x 23,3" Grip | M - 175



33,3 x 33,3 cm Grip | M - 150  
13,1" x 13,1" Grip | M - 150



29,2 x 59,2 cm | M - 135  
11,5" x 23,3" | M - 135

29,2 x 59,2 cm Grip | M - 135  
11,5" x 23,3" Grip | M - 135



29,2 x 29,2 cm | M - 010  
11,5" x 11,5" | M - 010



PELDAÑO RECTO FORMENTOR GRIP

COLECCIÓN DISPONIBLE EN 30 x 90 cm  
COLLECTION AVAILABLE IN 30 x 90 cm WHITE BODY p. 226  
COLLECTION DISPONIBLE EN PÂTE BLANCHE 30 x 90 cm p. 226  
KOLLEKTION ERHÄLTICH IN 30 x 90 cm WEISSE PASTE p. 226

MARFIL

BEIGE

GRIS



Formentor Blanco 30 x 90 cm · Formentor Blanco - Rel 30 x 90 cm · Lesny Nut 19,4 x 120 cm

# Formentor

30 x 90



WHITE BODY



WALL



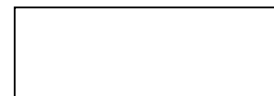
MATT



RECTIFIED



LIGHT



30 x 90 cm | M - 160  
11,8" x 35,4" | M - 160

FORMENTOR BLANCO - REL



30 x 90 cm | M - 251  
11,8" x 35,4" | M - 251

FORMENTOR MARFIL - REL



30 x 90 cm | M - 251  
11,8" x 35,4" | M - 251

FORMENTOR BEIGE - REL



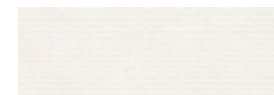
30 x 90 cm | M - 251  
11,8" x 35,4" | M - 251

FORMENTOR GRIS - REL



30 x 90 cm | M - 251  
11,8" x 35,4" | M - 251

FORMENTOR ROW BLANCO



30 x 90 cm | M - 251  
11,8" x 35,4" | M - 251

FORMENTOR ROW MARFIL



30 x 90 cm | M - 251  
11,8" x 35,4" | M - 251

FORMENTOR ROW BEIGE



30 x 90 cm | M - 251  
11,8" x 35,4" | M - 251

FORMENTOR ROW GRIS



30 x 90 cm | M - 251  
11,8" x 35,4" | M - 251

BLANCO

MARFIL

BEIGE

GRIS

# Formentor



Formentor Beige 30 x 90 cm · Formentor Beige - Rel 30 x 90 cm ·  
Formentor Beige 59,2 x 59,2 cm



Formentor Gris 30 x 90 cm · Formentor Gris - Rel 30 x 90 cm ·  
Concorde Iroko 19,4 x 120 cm





Harden Sand 90x90 cm - Morris Wood Maple 19,4x120 cm

# Harden

## Realistic and detailed cement

A proposal that unites high technology, avant-garde design and maximum quality.

More than 20 m<sup>2</sup> of real cement were 3D scanned to capture every movement, every inlay and every detail of the original material.

Thanks to the advances in materials and production processes that Cristacer continues to promote, we have managed to transfer all these details with exceptional precision to the ceramic pieces. The result is a product that is not only technically flawless, but also very pleasant to touch and look at, with a captivating aesthetic and long-lasting performance.

The Harden series is available in rectified porcelain tiles in 90x90, 60x120, 59.2x59.2 cm and white body tile in 30x90 cm format.

Its four porcelain colours, sand, pearl, grey and taupe, have been carefully studied to be in line with decorative trends. A harmonious and timeless colour range.

### *Decors and Finishes of the Harden Series*

To adapt to different needs and styles, the porcelain tile is available in two textures: Natural matt finish, for all types of modern and contemporary environments. Anti-slip finish, available in 90x90 cm and 59.2x59.2 cm formats, perfect for spaces that require greater safety, such as outdoors or wet areas.

The Harden series not only stands out for its realism and textures, but also for its decorations. In the 60x120 cm format, the Harden Chisel pattern comes in each of the base colours, adding a touch of sophistication and character to the collection. This relief décor, made using a press process with a linear design, gives a stunning visual effect and a texture that feels unique to the touch, providing a sense of depth and modernity.

### *Wall Tile and Special Pieces*

The Harden series is completed with a 30x90 cm rectified white body cladding, available in two elegant shades: Ivory and Ash. In addition, a coordinated relief decoration in the same colours is incorporated, which reinforces the visual harmony of the series.

To top it all off, the Harden series includes two special decorated pieces, which feature a granilla application inspired by textile textures. These pieces are the perfect finishing touch to give a unique personality and enriched chromaticism to any environment.

Harden is a contemporary and elegant series capable of fitting into any ambience





Harden Grey 60 x 120 cm · Sawan Green 15 x 15 cm Grip

# Harden RISING

60 x 120  
90 x 90  
59,2 x 59,2



PORCELAIN



FLOOR



WALL



MATT



RECTIFIED



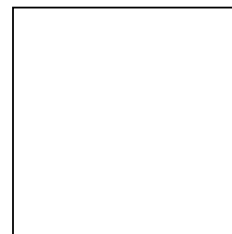
ANTI - SLIP



CLASS 3



LIGHT

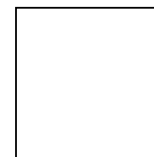


90 x 90 cm | M - 200

35,4" x 35,4" | M - 200

90 x 90 cm Grip | M - 200

35,4" x 35,4" Grip | M - 200



59,2 x 59,2 cm | M - 175

23,3" x 23,3" | M - 175

59,2 x 59,2 cm Grip | M - 175

23,3" x 23,3" Grip | M - 175



60 x 120 cm | M - 130

23,6" x 47,2" | M - 130

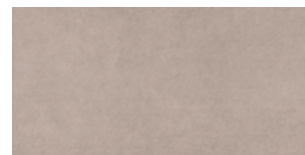
HARDEN CHISEL SAND



60 x 120 cm | M - 133

23,6" x 47,2" | M - 133

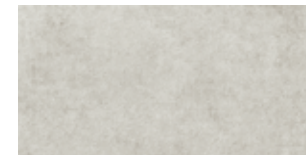
HARDEN CHISEL TAUPE



60 x 120 cm | M - 133

23,6" x 47,2" | M - 133

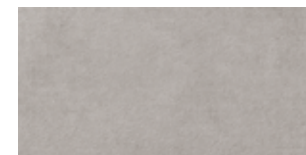
HARDEN CHISEL PEARL



60 x 120 cm | M - 133

23,6" x 47,2" | M - 133

HARDEN CHISEL GREY



60 x 120 cm | M - 133

23,6" x 47,2" | M - 133

SAND

PEARL

GREY

TAUPE



Harden Ivory 30x90 / Harden Frame Multi 30x90 cm / Morris wood  
Maple 19,4x120 cm

# Harden

30 x 90



WHITE BODY



WALL



MATT



RECTIFIED



LIGHT



30 x 90 cm | M - 160  
11,8" x 35,4" | M - 160

## HARDEN SHAPE IVORY



30 x 90 cm | M - 251  
11,8" x 35,4" | M - 251

## HARDEN SHAPE ASH



30 x 90 cm | M - 251  
11,8" x 35,4" | M - 251

## HARDEN FRAME LIGHT



30 x 90 cm | M - 251  
11,8" x 35,4" | M - 251

## HARDEN FRAME MULTI



30 x 90 cm | M - 251  
11,8" x 35,4" | M - 251

IVORY

ASH



Harden Pearl 60x120 cm / Harden Chisel Pearl 60x120 cm





Harden Grey Grip 90x90 cm / Harden Chisel Grey 60x120 cm

CRISTĂCER



# Flavia y Julia

## Classical Inspiration.

The Flavia and Julia series evoke the essence of Travertine, an iconic material of Roman architecture, reinterpreting its natural characteristics and adapting it to modern tastes.

Travertine marble, so important in the history of the Roman Empire, takes centre stage in these two collections. Flavia and Julia, names of two of the powerful women of the Roman Empire, pay homage to this stone that was fundamental in the creation of monuments and emblematic buildings of ancient Rome. Through these collections, Travertine adapts to contemporary trends, fusing the classic with the modern.

Both collections feature natural and harmonious shades: Bone, Ivory and Pearl, which bring elegance and serenity to spaces.

Flavia: With a Travertino Crosscut, it highlights a surface rich in graphic and chromatic details, offering a visual balance.

Julia: Uses a Veincut Travertine, cut following the veins of the material, creating a directional and distinctive aesthetic.

Flavia is available in 90x90, 59,2x59,2 and 60x120 cm formats, in natural and non-slip finishes, ideal for floors and walls.

Julia is available in 60x120 cm format, in natural and polished finishes, adding a sophisticated touch to spaces.

The complementary piece Julia Chisel in 60x120 cm format offers a stone relief, ideal for covering walls with personality.

Both collections share the same colours, allowing harmonious combinations. With different formats, the Flavia and Julia collections combine the timeless beauty of Travertine with current trends, bringing elegance and sophistication to any space.

Flavia Pearl 90x90 cm / Julia Pearl 60x120 cm

CRISTĂCER





Flavia Ivory 90x90 cm

# Flavia

90 x 90  
60 x 120  
59,2 x 59,2  
29,2 x 59,2



PORCELAIN



FLOOR



WALL



MATT



RECTIFIED



ANTI - SLIP



CLASS 3



LIGHT



60 x 120 cm | M - 130

23,6" x 47,2" | M - 130

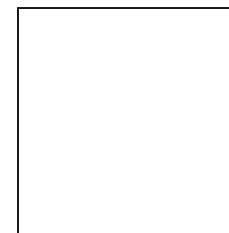
60 x 120 cm Grip | M - 130

23,6" x 47,2" Grip | M - 130



29,2 x 59,2 cm | M - 135

11,5" x 23,3" | M - 135



90 x 90 cm | M - 200

35,4" x 35,4" | M - 200

90 x 90 cm Grip | M - 200

35,4" x 35,4" Grip | M - 200



59,2 x 59,2 cm | M - 175

23,3" x 23,3" | M - 175

59,2 x 59,2 cm Grip | M - 175

23,3" x 23,3" Grip | M - 175

BONE

PEARL

IVORY





# Julia

60 x 120  
29,2 x 59,2



PORCELAIN



FLOOR



WALL



MATT



RECTIFIED



ANTI - SLIP



CLASS 3



MODERATED



60 x 120 cm | M - 130  
23,6" x 47,2" | M - 130

60 x 120 cm Grip | M - 130  
23,6" x 47,2" Grip | M - 130



29,2 x 59,2 cm | M - 135  
11,5" x 23,3" | M - 135

## JULIA CHISEL BONE



60 x 120 cm | M - 133  
23,6" x 47,2" | M - 133



## JULIA CHISEL IVORY



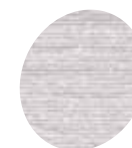
60 x 120 cm | M - 133  
23,6" x 47,2" | M - 133



## JULIA CHISEL PEARL



60 x 120 cm | M - 133  
23,6" x 47,2" | M - 133



BONE

PEARL

IVORY

Flavia Ivory 60x120 cm / Julia Ivory 60x120 cm / Julia Chisel Ivory 60x120 cm





Flavia Pearl Grip 60x120 cm / Harden Chisel Grey 60x120 cm

**CRISTĂCER**





Julia Bone 60x120 cm / Julia Bone Pulido 60x120 cm / Julia Chisel Bone 60x120 cm / Woodlay Redwood 19,4x120 cm / Woodlay Line Redwood 60x120 cm

**CRISTĂCER**



Flavia Pearl 90x90 cm / Julia Pearl 60x120 cm





Lumber Maple 30x90 cm / Harden Ivory 30x90 cm / Harden Taupe 90x90 cm

# Lumber

30 x 90



WHITE BODY



WALL



MATT



RECTIFIED



LIGHT



30 x 90 cm | M - 160  
11,8" x 35,4" | M - 160

## Decorative wood

The Lumber series is a rectified white body, in 30x90 format, characterised by a slatted relief decorated with a warm, natural wood graphic. This characteristic relief gives a unique and elegant touch to any interior design.

Available in two colours. Maple: A deeper colour, evoking the warmth and robustness of hardwood, ideal for cosy environments. Oak: A soft and delicate tone that brings freshness and luminosity to the environment.

Lumber is designed to combine perfectly with all our 30x90 collections, allowing a wide variety of combinations and giving a new look to our entire catalogue of ceramic wall tiles.

This series offers versatility for both residential and commercial projects, adapting to any style of decoration and providing a feeling of nature and comfort. In addition, its easy installation and maintenance make Lumber the ideal choice to transform any ambience

OAK

MAPLE



# Morris Wood RIŠIŅĀ

60 x 120  
59,2 x 59,2  
19,4 x 120  
8 x 59,2







Morris Wood Dec Cherry 60 x 120 cm

# Morris Wood rising

60 x 120  
59,2 x 59,2  
19,4 x 120  
8 x 59,2



PORCELAIN



FLOOR



WALL



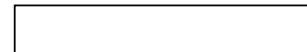
MATT



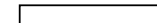
RECTIFIED



CONSIDERABLE



19,4 x 120 cm | M - 194  
7,6" x 47,2" | M - 194



8 x 59,2 cm | M - 193  
3,1" x 23,3" | M - 193

## MORRIS WOOD DEC ELM



60 x 120 cm | M - 133  
23,6" x 47,2" | M - 133

## MORRIS WOOD DEC MAPLE



60 x 120 cm | M - 133  
23,6" x 47,2" | M - 133

## MORRIS WOOD DEC CHERRY



60 x 120 cm | M - 133  
23,6" x 47,2" | M - 133

## MORRIS WOOD STICK MIX



60 x 120 cm | M - 133  
23,6" x 47,2" | M - 133

## MORRIS WOOD STICK CHERRY



60 x 120 cm | M - 133  
23,6" x 47,2" | M - 133

ELM

MAPLE

CHERRY



Morris Wood Stick Mix 60x120 cm / Morris Wood Maple 19,4x 120 cm / Harden Sand 60x120 / Harden Sand 90x90 cm



# CRİSTÁCER

Ceramics that feel close



[www.cristalceramicas.com](http://www.cristalceramicas.com)